

Environment Agency

CECA SW
Sandy Park, Exeter

Wednesday 26th March 2025

Sharna Richings
Delivery Manager, South West

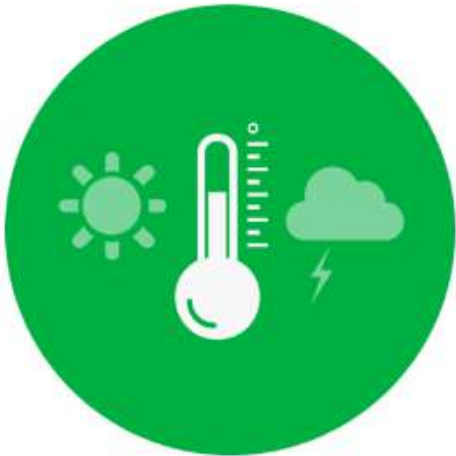
Stuart Allen
Deputy Director, Asset Transformation

Agenda

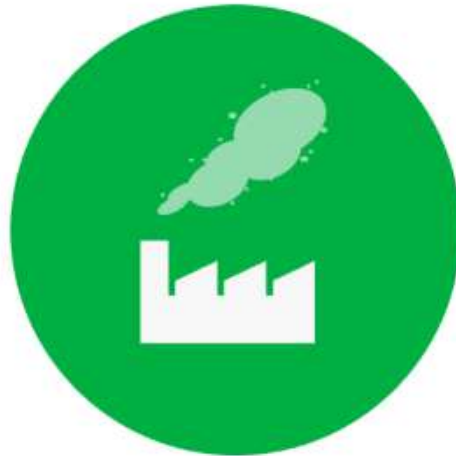
- Environment Agency overview & priorities
- An update on existing and new frameworks
- Information about the South West hub
- Discussion and Q&A

Environment Agency – Who Are We?

The Environment Agency works to create better places for people and wildlife and supports sustainable development.



We help people and wildlife adapt to climate change and reduce its impacts



We improve the quality of our water, land and air by tackling pollution



We work as part of the Defra group to create a better place for people and wildlife



Support a more resilient nation in a changing climate.



Healthy air, land and water.



Green growth and a sustainable future.

Existing Framework – Overview

Live Framework – Overview

Asset Operation, Maintenance and Response Framework (Asset OMR)

Scope of Services: a summary



The services provided by the Asset OMR Framework are split between three Lots. Further information can be found in [Schedule 1: Scope of Services](#) of the Framework Deed of Agreement. This infographic simplifies the scope of services provided across each Lot.



Lot 1

CIVIL ENGINEERING: MAINTAIN AND CONSTRUCT

Civil engineering services below £1M for the construction, refurbishment, and repair of asset. Allows for design and build where required. Includes activities to support the operation assets inc. out of hours incident support.



Lot 2

MEICA REFURBISHMENT AND MAINTENANCE

Primarily focused on the refurbishment and maintenance of existing assets but includes for small scale new builds (inc. design and build). Includes activities to support the operation of assets inc. out of hours incident support.



Lot 3

VEGETATION MANAGEMENT, LANDSCAPE AND HABITAT CREATION

Vegetation management and arboriculture services. Includes landscape hard and softworks, habitat creation and establishment aftercare. Includes activities to support the operation of assets inc. out of hours incident support.

Framework Statistics

Commencement date:

04 March 2024

Framework duration:

Three years with one optional year extension

Total value of procurement:

£600M

No. of Lots:

3

No. of Delivery Partners:

27

This Framework has been procured under the Public Contract Regulations 2015.



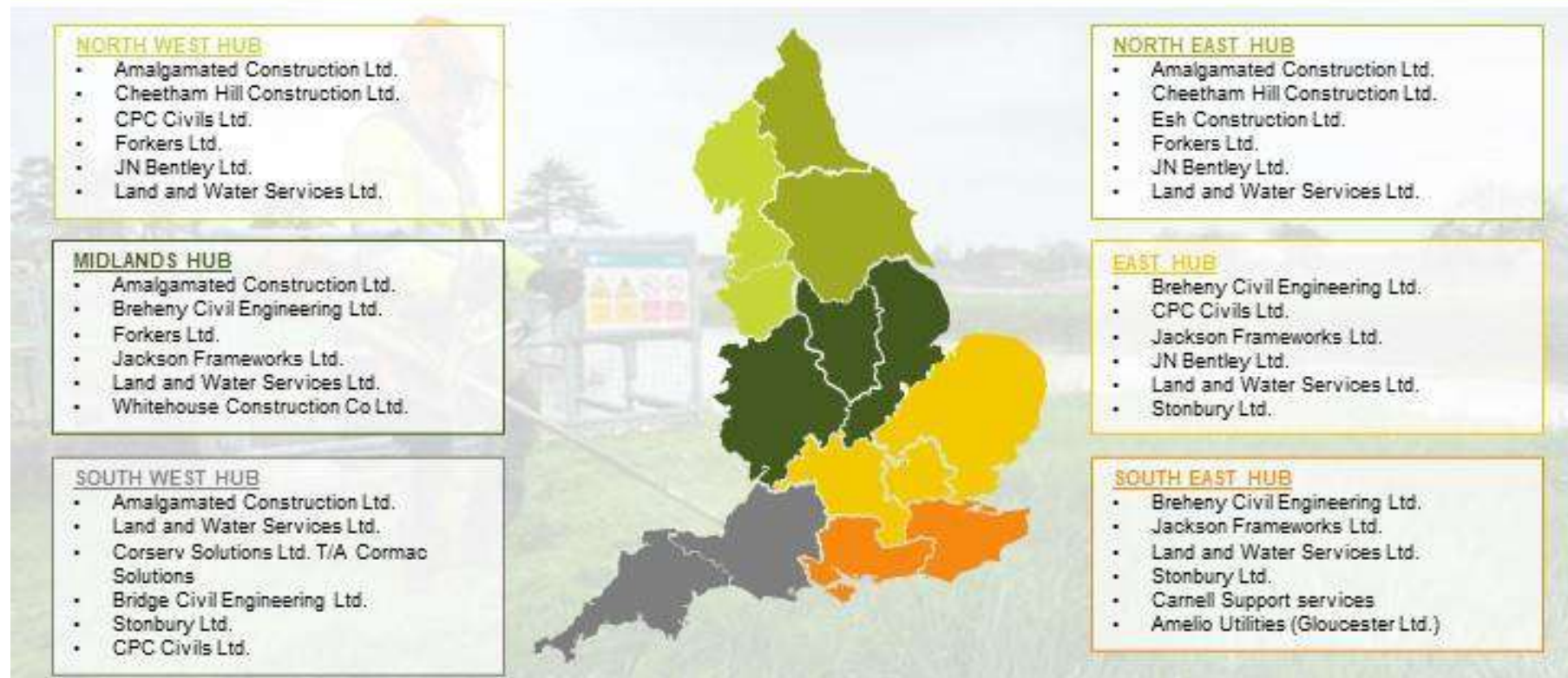
Live Framework – Overview

Asset Operation, Maintenance and Response Framework (Asset OMR)

Lot 1 Delivery Partners: geographical split



Lot 1:
Civil Engineering:
Maintain & Construct
<£1m



South West Hub

- Amalgamated Construction Ltd
- Land and Water Services Ltd
- Conserv Solutions Lt. T/A Cormac Solutions
- Bridge Civil Engineering Ltd
- Stonbury Ltd
- CPC Civils Ltd



Live Framework – Overview

Asset Operation, Maintenance and Response Framework (Asset OMR)

Lot 2: Delivery Partners: geographical split



Lot 2:
MEICA Refurbishment & Maintenance

South West Hub

- Fairfield Control Systems Ltd
- Galliford Try Construction Ltd
- Stonbury Ltd

NORTH WEST HUB

- Amalgamated Construction Ltd.
- Galliford Try Construction Ltd.
- JN Bentley Ltd.

MIDLANDS HUB

- Amalgamated Construction Ltd.
- ECS Engineering Services Ltd.
- Galliford Try Construction Ltd.

SOUTH WEST HUB

- Fairfield Control Systems Ltd.
- Galliford Try Construction Ltd.
- Stonbury Ltd.

NORTH EAST HUB

- Amalgamated Construction Ltd.
- ECS Engineering Services Ltd.
- JN Bentley Ltd.

EAST HUB

- ECS Engineering Services Ltd.
- Fairfield Control Systems Ltd.
- JN Bentley Ltd.

SOUTH EAST HUB

- Amalgamated Construction Ltd.
- Fairfield Control Systems Ltd.
- JT Mackley & Co Ltd.

Live Framework – Overview

Asset Operation, Maintenance and Response Framework (Asset OMR)

Lot 3: Delivery Partners: geographical split



1	Land & Water Services Ltd Stonbury Ltd Ground Control Ltd
2	Lowther Forestry Group Ltd Land & Water Services Ltd Stonbury Ltd
3	River Stewardship Company Ltd Land & Water Services Ltd Lowther Forestry Group Ltd
4	River Stewardship Company Ltd Lowther Forestry Group Ltd Groundwork Greater Manchester
5	Land & Water Services Ltd Ground Control Ltd Vegetation Management Services Ltd
6	River Stewardship Company Ltd Land & Water Services Ltd Ground Control Ltd
7	River Stewardship Company Ltd Land & Water Services Ltd Vegetation Management Services Ltd



8	Land & Water Services Ltd Vegetation Management Services Ltd Ground Control Ltd
9	Vegetation Management Services Ltd Nurture Landscapes Ltd
10	Land & Water Services Ltd Ground Control Ltd P J Chaffin Ltd
11	Land & Water Services Ltd Ground Control Ltd P J Chaffin Ltd
12	Land & Water Services Ltd Vegetation Management Services Ltd Nurture Landscapes Ltd
13	Glendale Countryside Ltd Land & Water Services Ltd Stonbury Ltd
14	Glendale Countryside Ltd Corserv Solutions Ltd (Cormac) Stonbury Ltd

Lot 3:
Vegetation Management,
Landscape and Habitat
Creation

South West Hub

- Fairfield Control Systems Ltd
- Galliford Try Construction Ltd
- Stonbury Ltd

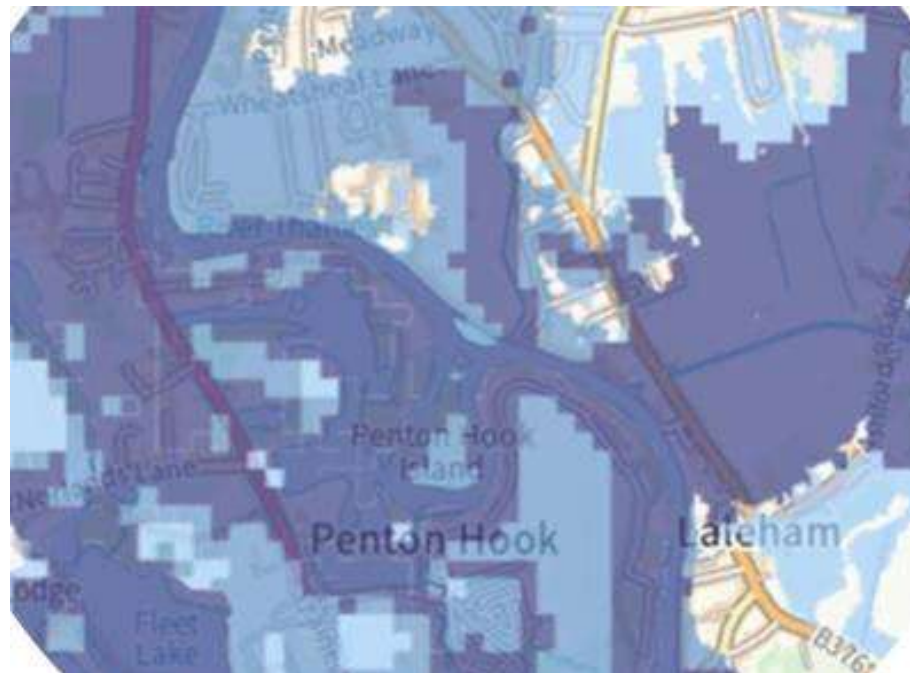
Live Framework – Overview

2024 Mapping & Modelling Framework

The Mapping and modelling services provide the Environment Agency with the data and evidence underpinning all investment decisions. The Mapping and Modelling Framework provides the scope of services required to develop and maintain data and evidence, enabling informed investment decisions.

The framework is a National Framework which comprises 6 individual Delivery Partners. The Delivery Partners are:

Framework Delivery Partners
AECOM Ltd
Atkinsréalis UK Ltd
Jacobs U.K. Limited
Jeremy Benn Associates Ltd
Mott MacDonald Ltd
WSP Binnies



Framework Statistics

Commencement date:

30 April 2024

Framework duration:

Three years with one optional year extension

Total value of procurement:

£52.5m (+£17.5m with extension)

No. of Lots:

1

No. of Delivery Partners:

6

This Framework has been procured under the Public Contract Regulations 2015.

Live Framework – Overview

2024 Property Flood Resilience (PFR) Framework

The Property Flood Resilience Framework provides consultancy and contracting services for the survey, supply, and installation of property flood resilience.

The Lot 1 Delivery Partner in each Hub will be able to support you with surveys and outline design, and the Lot 2 Delivery Partner with detailed design and installation.

Lot 1 Delivery Partners

	1a (NE)	1b (NW)	1c (Mids)	1d (SW)	1e (SE)	1f (EAST)
Primary	FPS	FPS	RAB	JBA	JBA	JBA
Reserve	RAB	JBA	FPS	RAB	FPS	RAB

Lot 2 Delivery Partners

	2a (NE)	2b (NW)	2c (Mids)	2d (SW)	2e (SE)	2f (EAST)
Primary	Flood Control NI	Flood Control NI	Whitehouse	M3 Floodtec	M3 Floodtec	Lakeside Flood Solutions
Reserve	Apex	Apex	Apex	Whitehouse	Whitehouse	Flood Control NI

Framework Statistics

Commencement date:

22 January 2024

Framework duration:

Two years with two optional years extension

Total value of procurement:

£125m

No. of Lots:

2

No. of Delivery Partners:

8

This Framework has been procured under the Public Contract Regulations 2015.

Live Framework – Overview

2023 MEICA Maintenance & EICR Frameworks

The MEICA Maintenance Frameworks provide services for planned and reactive maintenance works and minor project work for the Environment Agency's MEICA teams. It is designed solely for use by the Environment Agency's MEICA teams for the purpose of maintaining operational assets.

The MEICA Maintenance Frameworks comprises 6 individual, geographically-based Frameworks, aligned to the MEICA Supra-Areas, with a single Delivery Partner appointed to each. Each area also has a reserve Delivery Partner.

Framework Statistics

Commencement date:

1 September 2023

Framework duration:

Three years with one optional year extension

Total value of procurement:

£56.5M

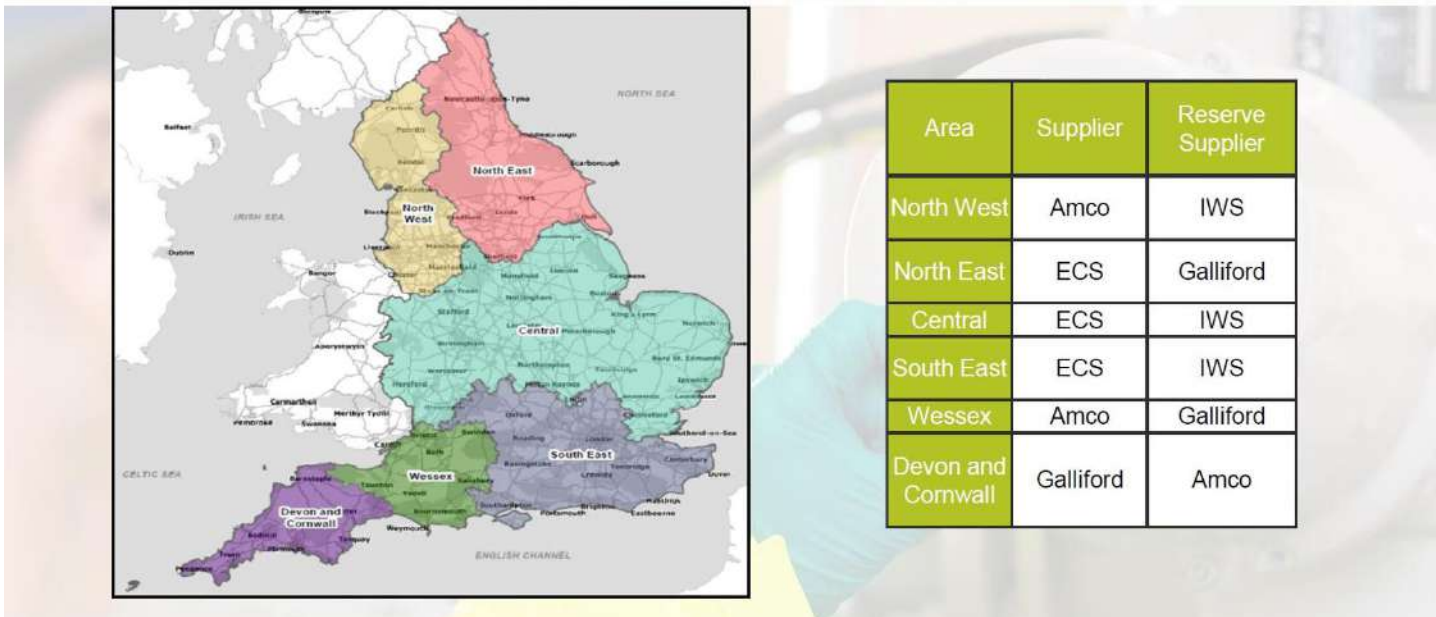
No. of Lots:

6

No. of Delivery Partners:

4

This Framework has been procured under the Public Contract Regulations 2015.



Future Framework - Overview

The framework renewals programme has the aim of achieving continuity in service for our consultancy and contracting commercial arrangements to support delivery of the capital investment and revenue programmes, including transition arrangements.

We have reviewed our framework arrangements and are now moving into the delivery stage of extending, renewing or replacing most frameworks.

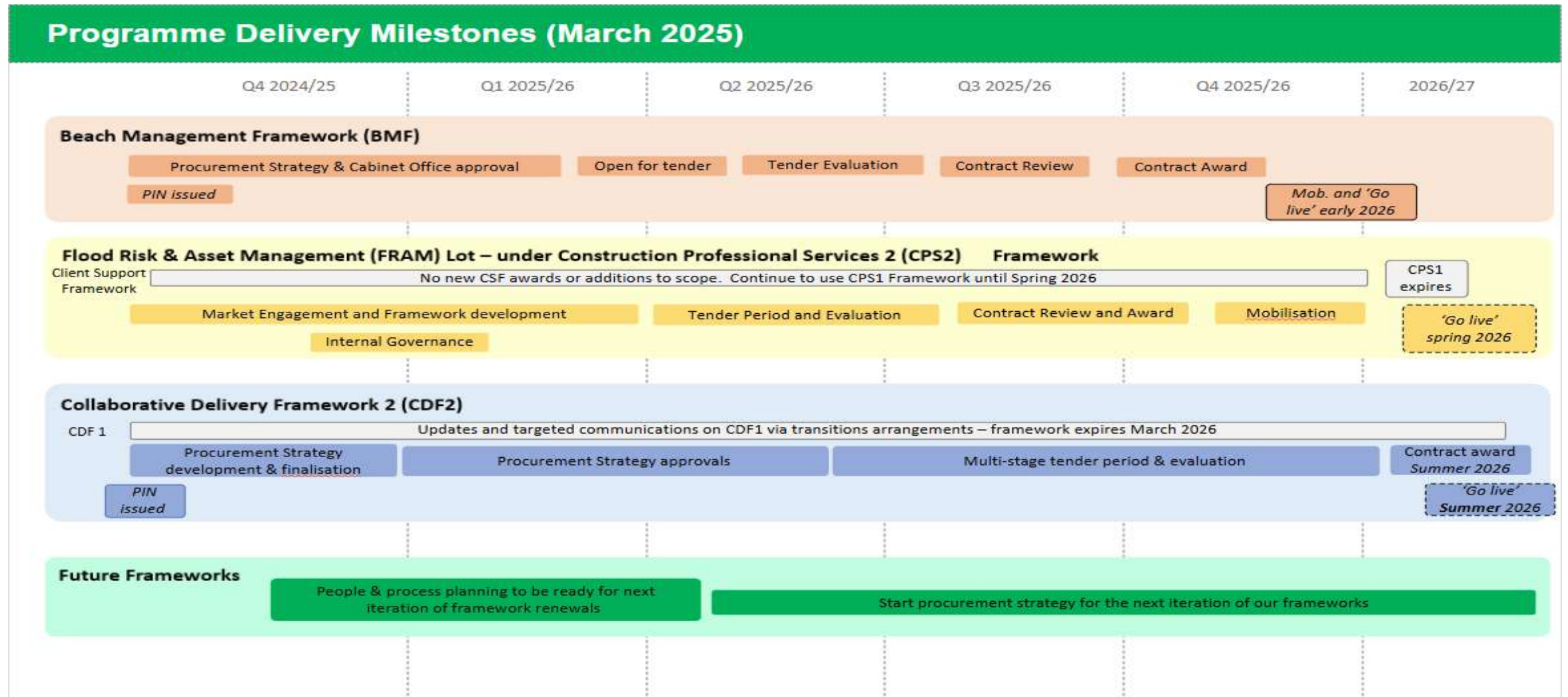
Opportunity to simplify and align our frameworks, ensure we incorporate appropriate elements of Government commercial standards and are flexible enough to respond to changing future needs.

We have commenced engagement on a number of renewals through Prior Information Notices (PINs).

We are undertaking wider user engagement and pre-tender market engagement exercises with full transparency and in line with the Procurement Regulations.

Market engagement before starting the formal procurement process is essential good practice and helps maximise value for money and encourage appropriate innovation – so please, **if interested, respond proactively to the PINs issued so we can drive our agenda forward.**

Future Framework - Overview



Future Framework – Overview

Collaborative Delivery Framework 2 (CDF2)

Collaborative Delivery Framework 2

26 March 2025



Scope for Environment Agency Collaborative Delivery Framework 2 (CDF2)

Scope of Service for this framework is to:

- Support the Environment Agency and other Risk Management Authorities to deliver their capital and revenue programmes including the wider asset management process;
- Support the delivery of Environment Agency's 2020 Flood and Coastal Erosion Risk Management (FCERM) Strategy for England, 2023-2033 Asset Management Strategy, and the sustainability strategy – eMission 2030
- Deliver asset management activities across the whole of the Environment Agency's asset base including Flood and Coastal Risk Management, Navigation and Water Land and Biodiversity assets

Lot 1

Strategy, Appraisal, Design and
Incident Response Support
Services

**Up to 6 Suppliers, subject to
market capacity**

Lot 2

Simple Appraisal, Early
engagement, Business Case
Support, Detailed design services
and construction works and
Incident Response Support
(lower value up to ~£5m)

**Up to 6 Suppliers, subject to
market capacity**

Lot 3

Early Engagement and business
case support. Detailed design
services and construction works
and Incident Response Support
(higher tier from ~£5m)

3 Suppliers

Framework Duration & Value

Options between 6 to 8 years being considered (including use of extension and break clause)

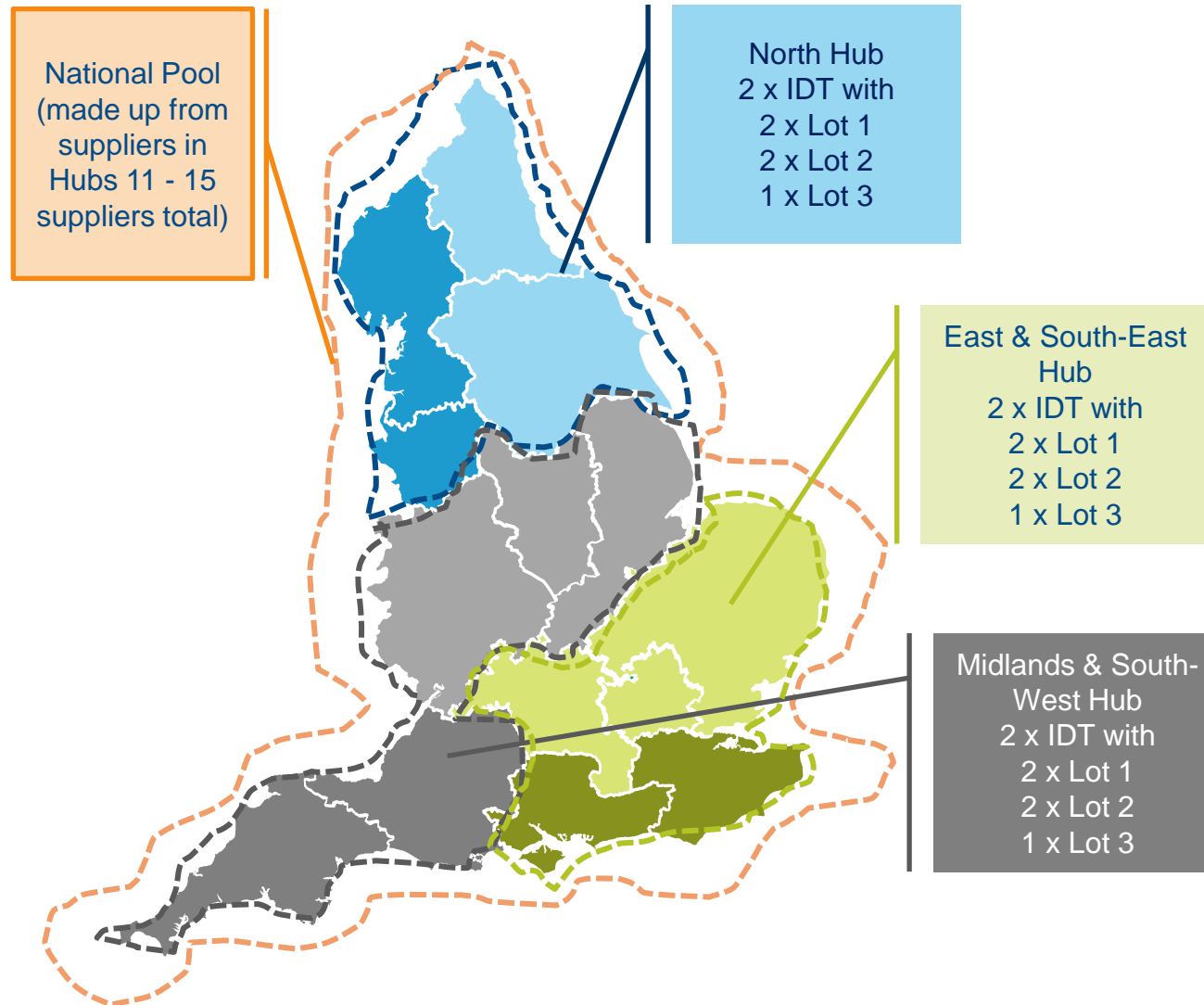
Potential Framework Value £3.5 – 5.5 bn

Currently up to £75m contract value included, potential increase to be considered as part of engagement



CECA (South West) Members Meeting March 2025

Regional Structure and Suppliers



Note grouping outline illustrative only – it is not intended that there are actual overlaps.



Past Engagement April 2024 Onwards

Included request for initial expression of interest and data gathering and feedback on specific focus areas including capacity, contracting options and fee

All Prior Information Notices (PINs) can be viewed on Contracts Finder.

[Contracts Finder - GOV.UK](#)

Most Recent Engagement January and February 2025

Webinar, face to face engagement events, feedback questionnaire to share CDF2 proposals with the market, test elements of the model and obtain feedback

A copy of the webinar recording has already been shared with those who have registered interested. If you would like to receive this, please email: **cdfreplacement@defra.gov.uk**

Future Planned Engagement Spring 2025

Sharing information around tender and evaluation process
Sharing draft tender documentation to support understanding and clarification of queries in advance of formal tender issue

If you would like to receive ongoing communications from the EA/DgC relating to CDF2, please email:

cdfreplacement@defra.gov.uk

Please note that due to changes in the programme, the tender period for CDF2 is now expected to commence in late August 2025 rather than the previously communicated date of July.

Behaviours



Delivering quality outcomes:

Working together to promote quality of standards and find a commercially viable, safe and sustainable way to deliver against shared objectives



Solving problems and making decisions:

Jointly owning problems, openly exploring options to come up with well supported, optimum value solutions whilst making effective and timeline decisions



Innovating and adapting:

Sharing ideas, experiences and expertise to improve and do things differently whilst learning from mistakes and seeing risks as opportunities



Working as One Team:

Building strong connections by working together with colleagues, stakeholders, customers & the community to build supportive and inclusive relationships



Why partner with the Environment Agency?

- Play a key role in tackling the climate and nature emergency
- Collaboratively deliver a diverse set of award winning projects
- Obtain funding to participate in mutually beneficial activities, such as:
 - Collaborative Communities of Practices
 - » SHEW
 - » Innovation
 - » Sustainability
 - » Digital
 - » Stakeholder engagement
 - Pilots, trials, task & finish groups
- Drive positive cultural and behavioural changes - psychological safety
- Develop our staff



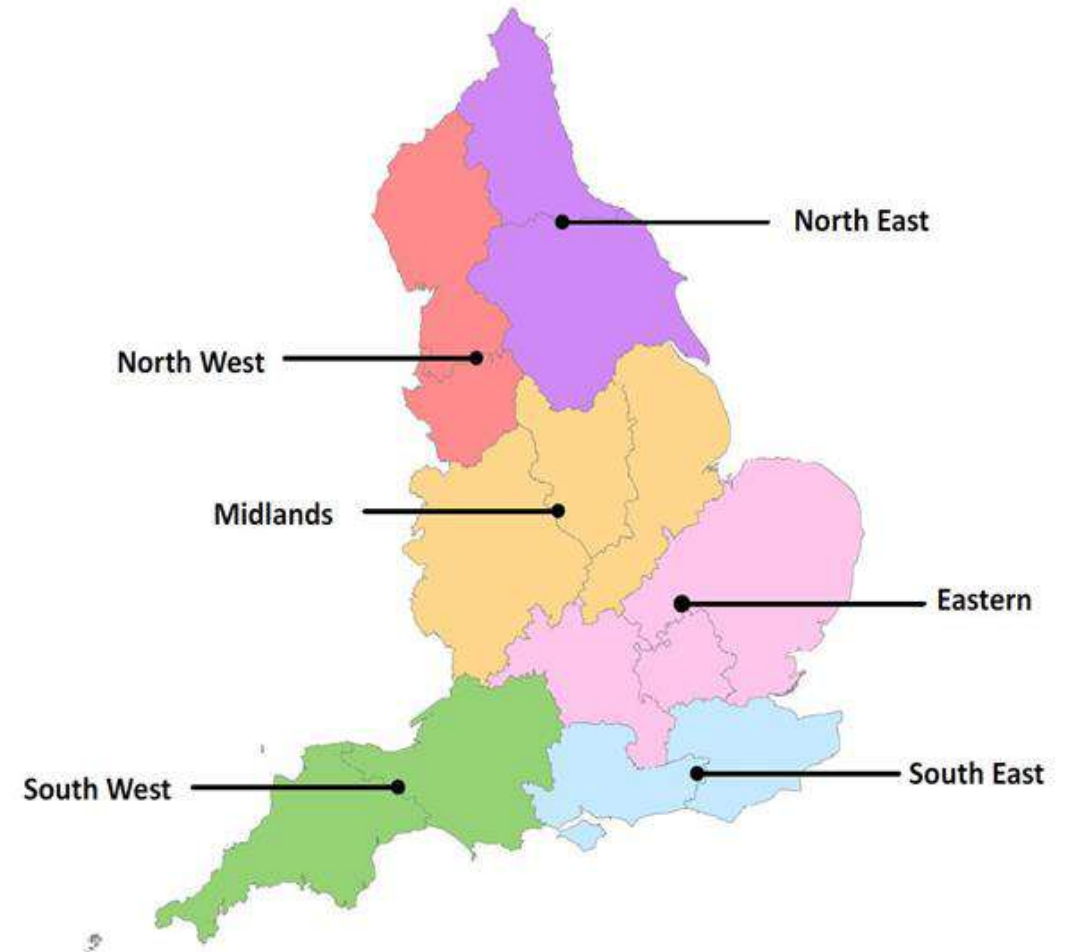
Who's who in the South West IDT



What is the EA's Current Delivery Model?

Integrated Delivery

- The Next Generation Supply Arrangements (NGSA) came into effect on 1st April 2019
- Six Geographic Delivery Hubs each with its own Integrated Delivery Team (IDT)
- A strong focus on collaboration, partnership arrangements, value for money and excellence in Health and Safety
- Integration across all frameworks with a clear alignment of behaviours and ways of working.



What is the EA's current Delivery Model?

Integrated Delivery

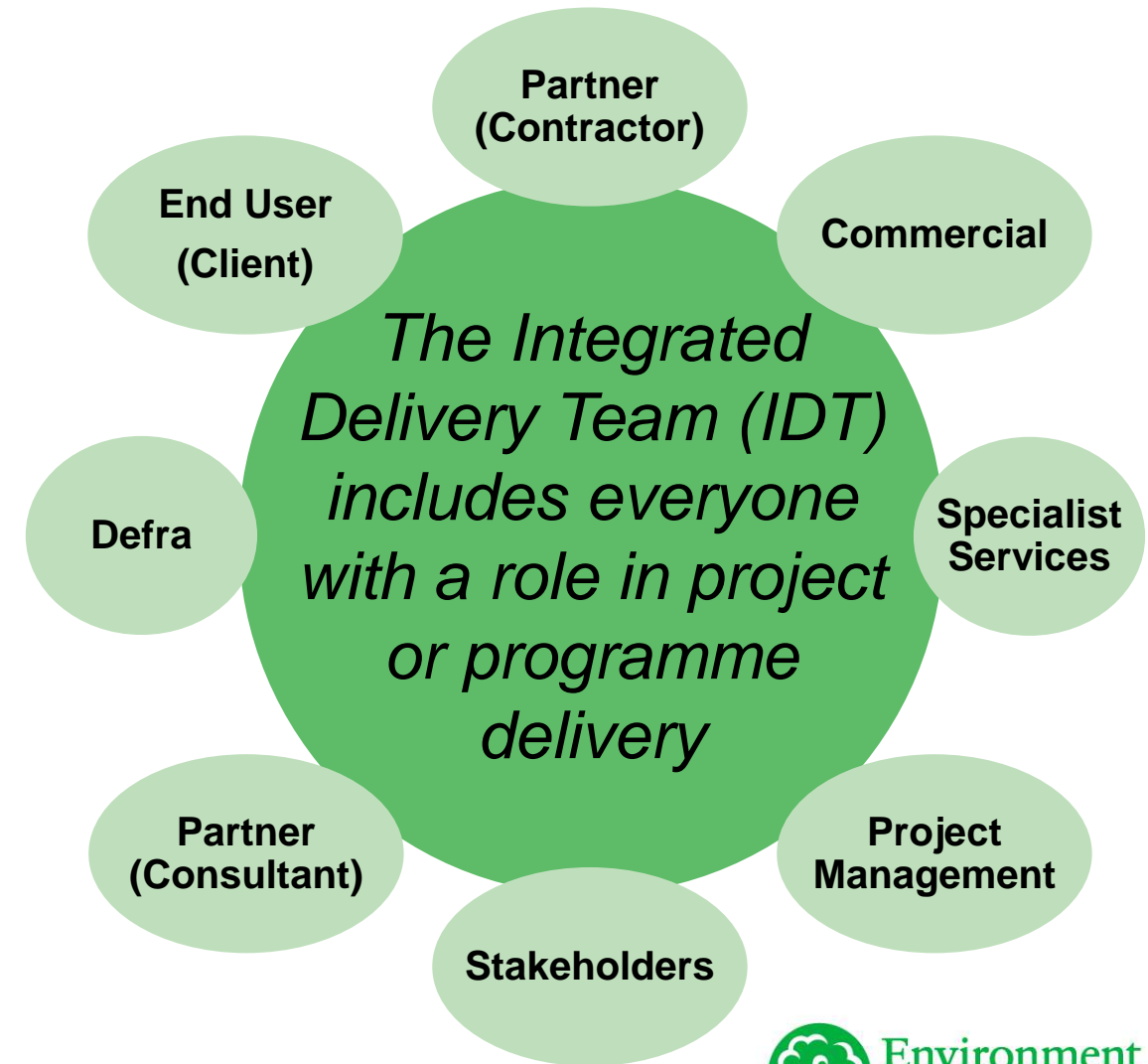
- Collaborative Delivery Framework (CDF1):
 - Lot 1 - Consultancy – Atkins
 - Lot 2 - Contractor – Kier
- The Asset Operation Maintenance and Response AOMR Framework:
 - Lot 1 - Civil Engineering (Maintain and Construct) (Contracts <£1m)
AMCO, Bridge Civil Engineering, Corserv, CPC Civils, Land & Water, Stonbury
 - Lot 2 – MEICA
Stonbury, Fairfield Control Systems, Galliford Try
 - Lot 3 – Vegetation management & landscape & habitat creation
Wessex: Land & Water, Glendale Countryside, Stonbury,
Devon, Cornwall: Glendale Countryside, Stonbury, Corserv



What is the EA's current Delivery Model?

There is a greater emphasis on working together, across all the teams:

- Longer term working relationships and arrangements
- Adoption of portfolio/programme level approaches
- Decisions are made in the interests of the programme as a whole, not individual projects
- Improved planning and earlier delivery partner involvement
- Better value for money that achieves more outcomes



The South West IDT vision

One team, working collaboratively to optimise delivery of the South West Hub's programme, safely and sustainably, for the benefit of our communities and environment.

Who's who in the South West IDT?

The South West Hub is made up of two independent Areas who both report into their respective Regional Flood & Coast Committee (RFCC).

A few key EA contacts:

Hub Delivery Manager:	Sharna Richings
Hub Prog. Specialists:	Richard Hull (people) + Ross Barton (programme)
Hub Commercial Lead	Kerrie Pitson (EA)
Hub Commercial Lead	Matthew Cole (Defra)
Area Directors	Ian Withers (Wessex) Mark Rice (Devon & Cornwall)
Area Flood Risk Managers:	Ron Curtis, Rachel Burden, Andrea Summers (Wessex) Ben Johnstone (Devon & Cornwall)

IDT = Integrated Delivery Team

How we meet, share and plan

Forum	Frequency
IDMT Leadership Meeting - Area (Followed by DM & delivery partners planning meeting)	Bi-monthly (hybrid)
IDMT Meeting - Performance - Key updates - Project Focus	Bi-monthly (hybrid)
All IDT call - Performance - Team Focus - Project case study	Quarterly (Teams)
Ways of working group	Fortnightly (initially, moving to monthly once established?)
Sub-groups	As required



A few of our current projects

Bridgwater Tidal Barrier Scheme



Bridgwater Tidal Barrier
The Scheme will reduce tidal flood risk to 11,300 homes and 1,500 businesses



Project Partners



Bridgwater Tidal Barrier Scheme



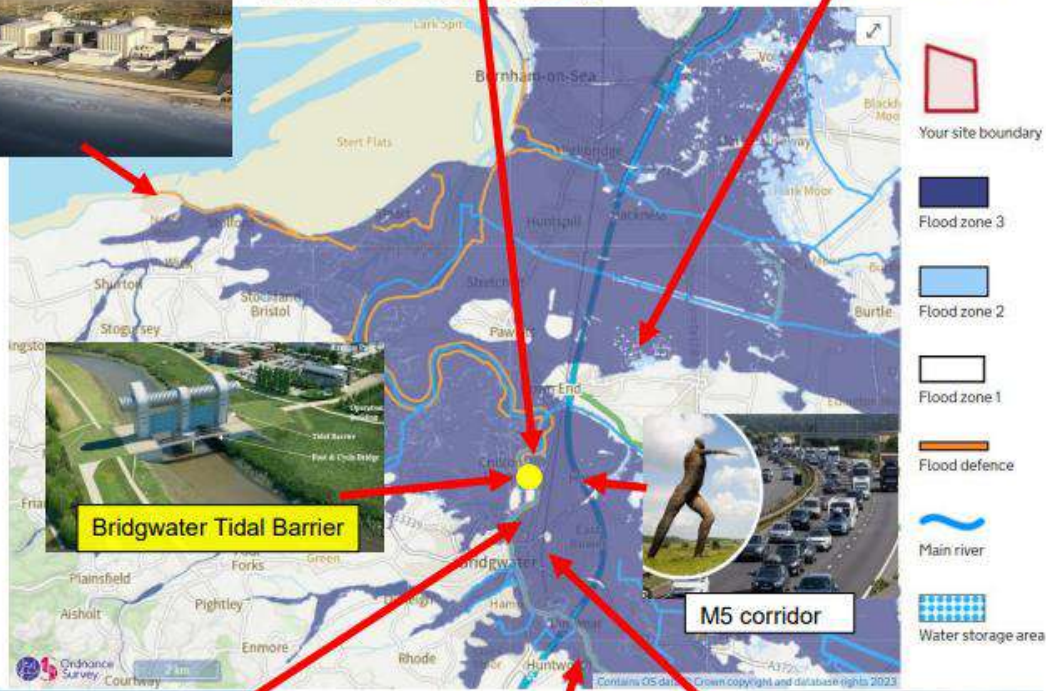
Business Parks



Gravity site



Hinkley Point C nuclear power station (HPC)



Bridgwater Tidal Barrier

M5 corridor

Fire and Rescue Station, Bridgwater



Rail lines flooded 2013-14



National Grid substation and HPC connection pylons



Brief history of the scheme:

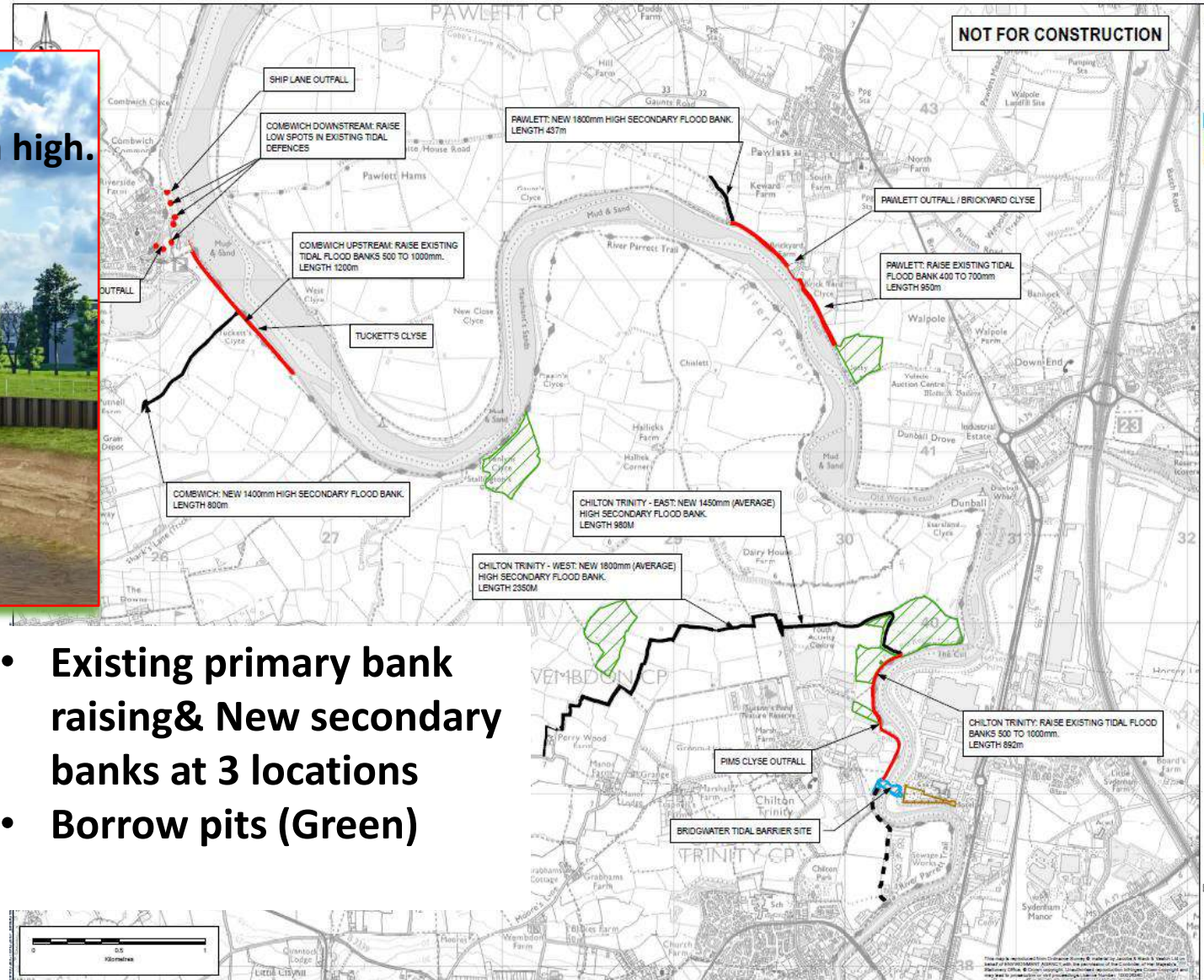
- Flood Defence failure Nov 2011
- Flood Event Jan 2014
- Strategic Outline Case approved Dec 2015
- Outline Business Case approved Aug 2021
- Transport & Works Act order Jan 2022
- FBC approved Sept 2024
- Scheme cost £248m

Bridgwater Tidal Barrier Scheme



Chosen Design – Twin Vertical Lift Gate barrier and Downstream defences

The towers are 25m high.
Each gate is 15m wide & 10m high.



- ✓ Proven reliability in a high silt environment
- ✓ Easier to maintain and replace than other barrier types
- ✓ Similar technology to other major sluices in Somerset

- Existing primary bank raising & New secondary banks at 3 locations
- Borrow pits (Green)

Minimises Whole Life Cost and operational carbon emissions





Salisbury River Park



Environment
Agency

Wiltshire Council

SALISBURY
CITY COUNCIL



Swindon & Wiltshire
LOCAL ENTERPRISE PARTNERSHIP



Department
for Environment
Food & Rural Affairs



national
highways



Department
for Education

Project overview

- Outcomes
 - ~£550m benefits (OM1)
 - 1,131 properties (OM2A and 2B)
 - 0.5ha habitat created (OM4A)
 - 0.5km river improved (OM4B)
- Programme
 - 4 years to Gateway 3
 - 2.5 years in construction
 - Gateway 4: January 2025
- Whole Life Cost - ~£49M
 - ~£12M partnership funding



Salisbury River Park

Climate change resilience improved

Approximately 100 businesses better protected from extreme flood events, leading to increased job security

Enhanced tourist gateway and increased visitor numbers

250 homes better protected from an extreme flood event

Improved cycling and pedestrian routes, to be separated wherever possible

New planting, including many new trees

Delivery of 13ha of high quality public open space to be enjoyed by all

Increased opportunities for volunteer groups to become more involved in their local environment

Enhanced green infrastructure will improve amenity and well-being for visitors and local residents

Removal of visually obtrusive structures

Improved fish and eel migration through the River Avon

Creation of 2ha new high quality riverside habitat for a variety of species

Improved ecological condition of the internationally designated River Avon watercourses









Notable successes

- Partnership working with Wiltshire Council and others
- Significant PF Contributions
- Regeneration and community benefits
- Environmental enhancement
- Community engagement



The Moors at Arne

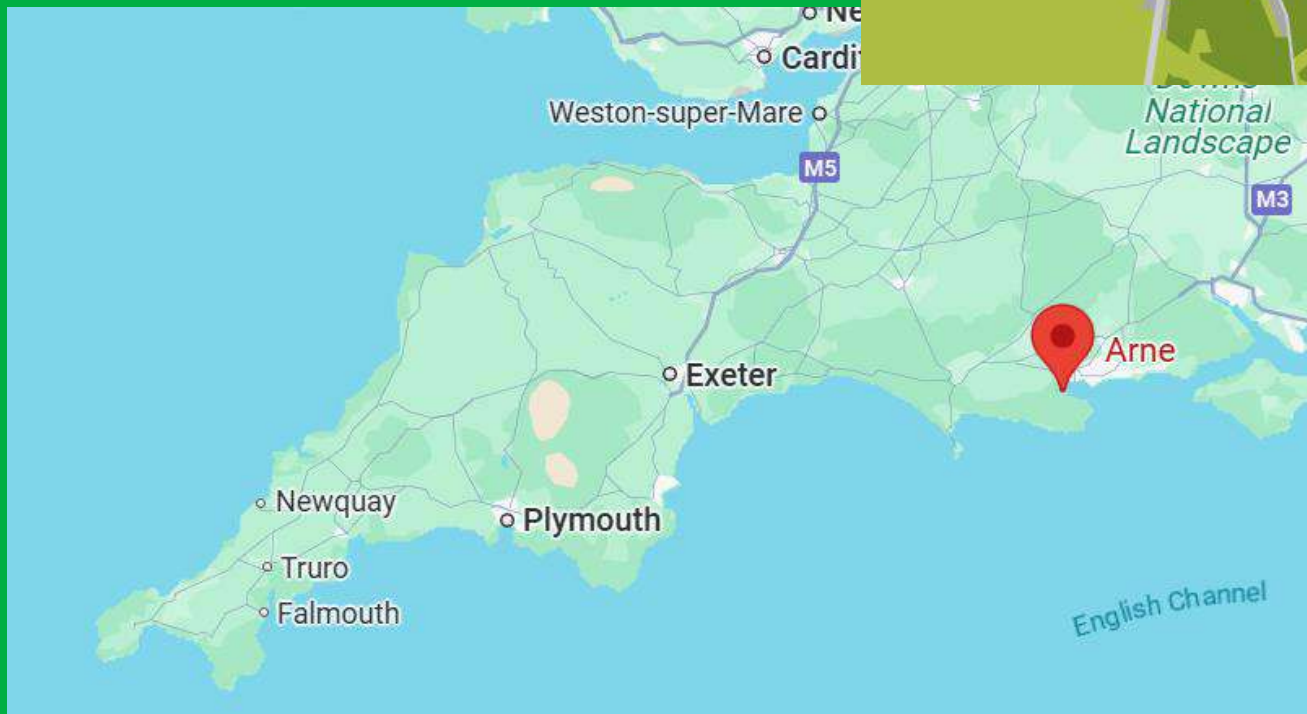
A diverse wetland that will be a mosaic of intertidal habitat,
freshwater habitat and shallow saline lagoons.



The Environment Agency, RSPB and Natural England are working together to adapt approximately 150 hectares of the Moors at Arne into a diverse wetland that will be a mosaic of intertidal habitat, freshwater habitat and shallow saline lagoons



The Moors at Arne Location



- project cost ~£55m
- currently in construction
- completion planned 2026

Why is the project needed?

To protect people and property from flood and erosion, the 2014 Poole Harbour and Wareham Flood and Coastal Erosion Risk Management Strategy recommends maintaining the current defence alignment along several sections of coastline within Poole Harbour.

Much of the intertidal habitat in front of these areas of coastline is legally protected under the Habitats Regulations and implementing the strategy would result in the loss of this habitat through 'coastal squeeze'.

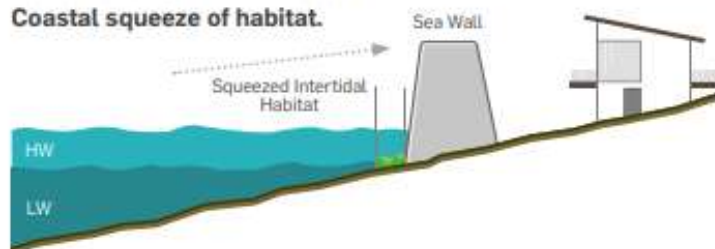
Compensation of this lost habitat is legally required under the Habitats Regulations. This project will create the required compensatory habitat, which will enable the future coastal defence works recommended in the strategy to be carried out to provide protection for 3,000 properties in Poole Harbour from flood risk associated with climate change.

**Coastal squeeze
before sea level rise.**



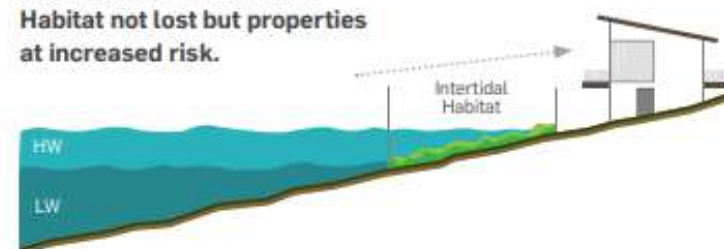
Situation 1

Sea level rise & sea wall raised.
Coastal squeeze of habitat.



Situation 2

Sea level rise if NO sea wall.
**Habitat not lost but properties
at increased risk.**



What are the new features?

- A**  Shallow saline lagoons for bird roosting when high tide in harbour
- B**  Three open breaches to allow tides to flow freely in and out
- C**  **Eastern Embankment** to protect Special Area of Conservation (SAC) habitat from extreme tides
- D**  New Furzebrook outfall structure
- E**  **Western Embankment** to protect property and freshwater area from extreme tides
- F**  Walking routes link to RSPB Arne Nature Reserve

- G**  Two disabled parking spaces
- H**  Permissive path with viewing points
- I**  Freshwater area to preserve important plants and species
- J**  New Causeway outfall structure
- K**  New Intertidal area
- L**  Viewing Points



How intertidal habitats will be created

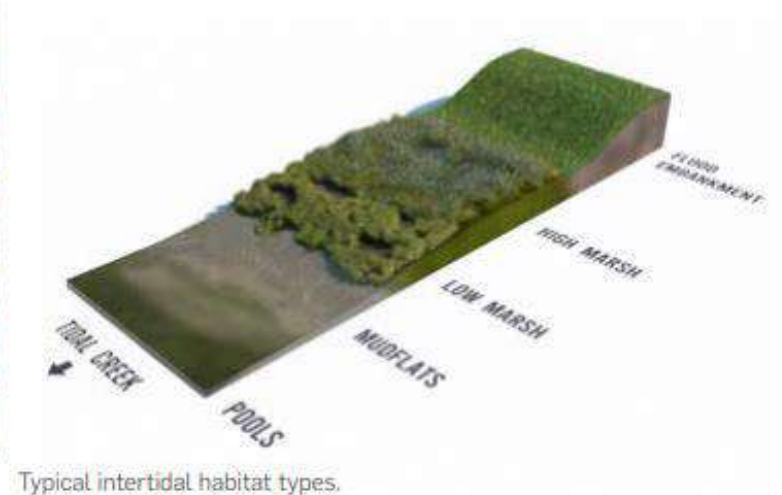
The creation of the intertidal habitats will involve the construction of new tidal embankments further inland than the existing ones. Once in place, the land in front of the new embankments will be open to the action of the tides, which will create the new intertidal habitats. The habitats will take several years to establish and will continue to evolve over time.



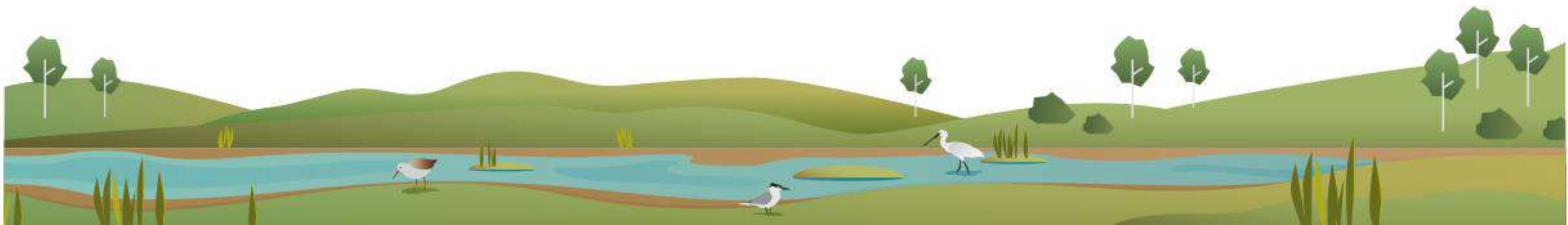
Intertidal habitat at RSPB Lytchett Fields.



Intertidal habitat at RSPB Lytchett Fields.



Typical intertidal habitat types.



Discussion & Question Time

