



THE BRISTOL PORT COMPANY

Presentation by
John Chaplin BSc CEng FICE



26 June 2024





THE BRISTOL PORT COMPANY



Current Key Trades and Cargoes



THE BRISTOL PORT COMPANY

Bristol Port handles an eclectic mix including...



Automotive



Break Bulk



Containers



Warehousing



Dry Bulks



Liquid Bulks



Project Cargo



Cruise

Future Key Trades, Cargoes, Roles



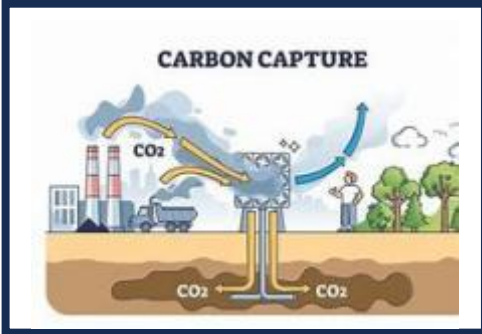
THE BRISTOL PORT COMPANY



HPC/Sizewell



FLOW



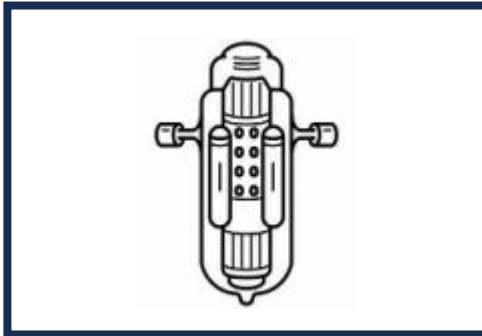
**Carbon Capture
Utilisation Storage**



Hydrogen



Gravity



SMR



SAF



LIDP

Supporting nuclear - Muster Port for EdF



THE BRISTOL PORT COMPANY



AIL Storage

Aggregate storage & delivery

PCC unit factory & RC assembly area

Covered, secure, AIL Storage

AIL quay

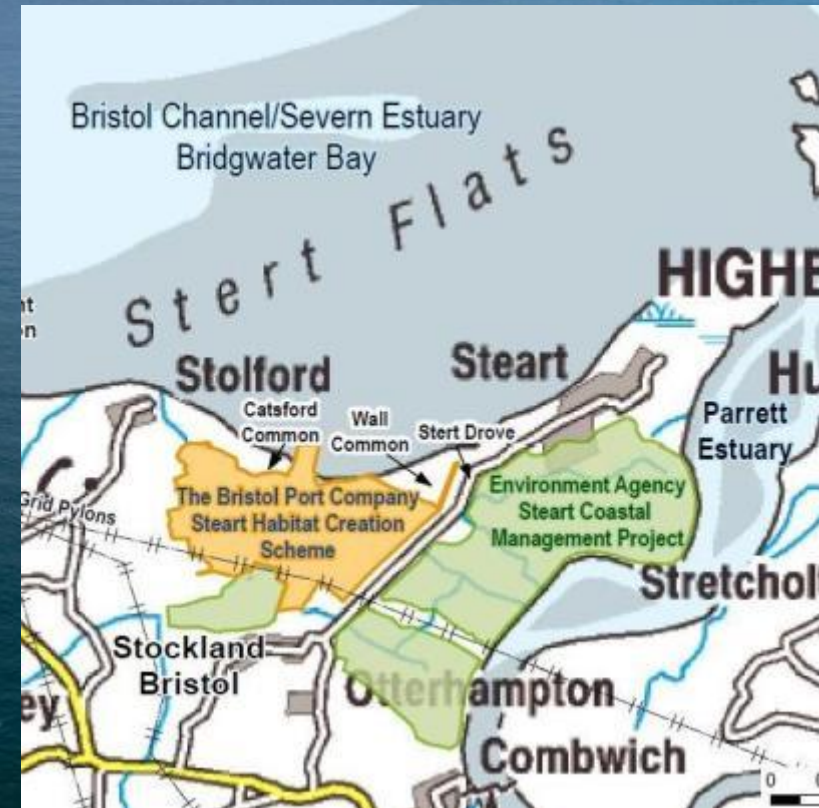
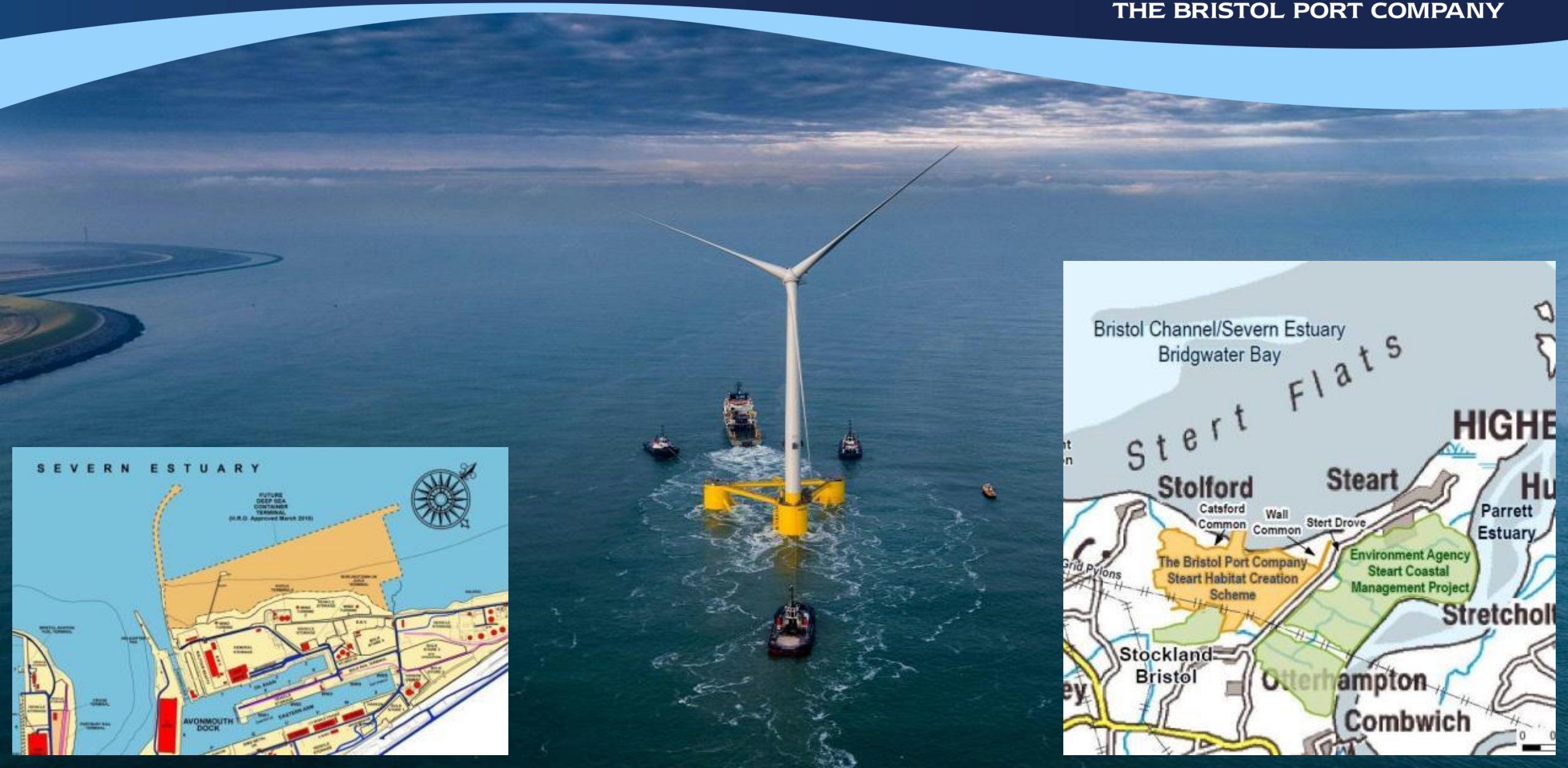
Steelwork assembly facility

AIL Storage

Celtic Sea - Floating Offshore Wind

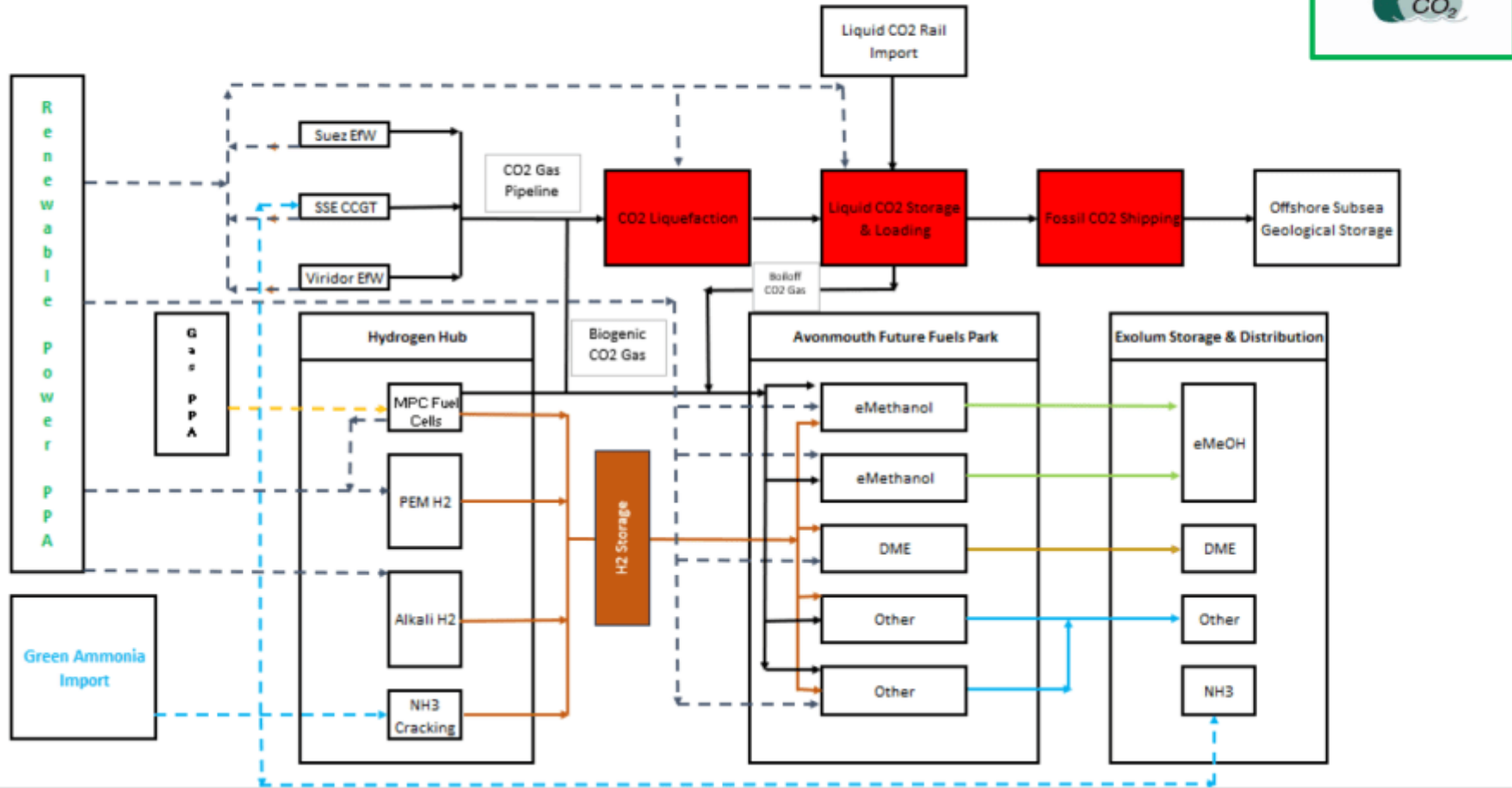


THE BRISTOL PORT COMPANY





LIDP WP 7 eFuel & Hydrogen Pathways

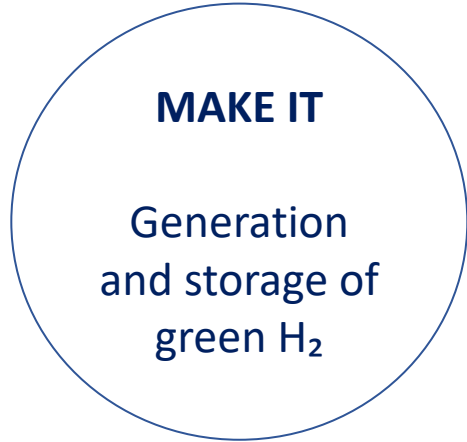


Estuary Energy - a potential Hydrogen Hub



THE BRISTOL PORT COMPANY

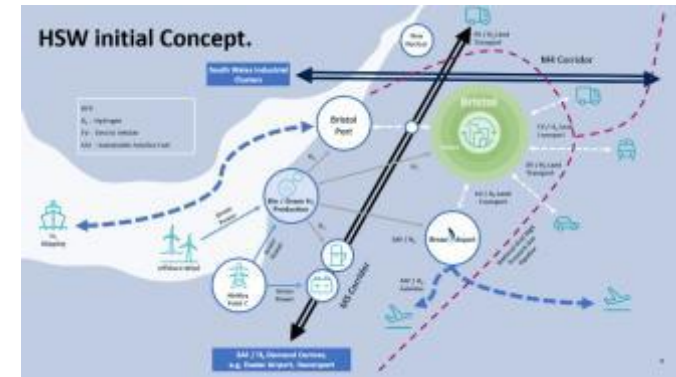
- Land available for electrolyser and storage facilities
- Start small, scale up



- BPC Cargo handling equipment
- BPC Port vessels
- Tenant and customer activities
- Commercial Shipping



- Possible terminal for the import/export of Ammonia, Hydrogen processing facility
- Multimodal transport hub (HGV's, Cars, Trains, Buses)
- Wales & West Utilities (Gas network blending)
- Bristol Airport, Air bus, GKN
- Other Industry & Power in the Port Hinterland



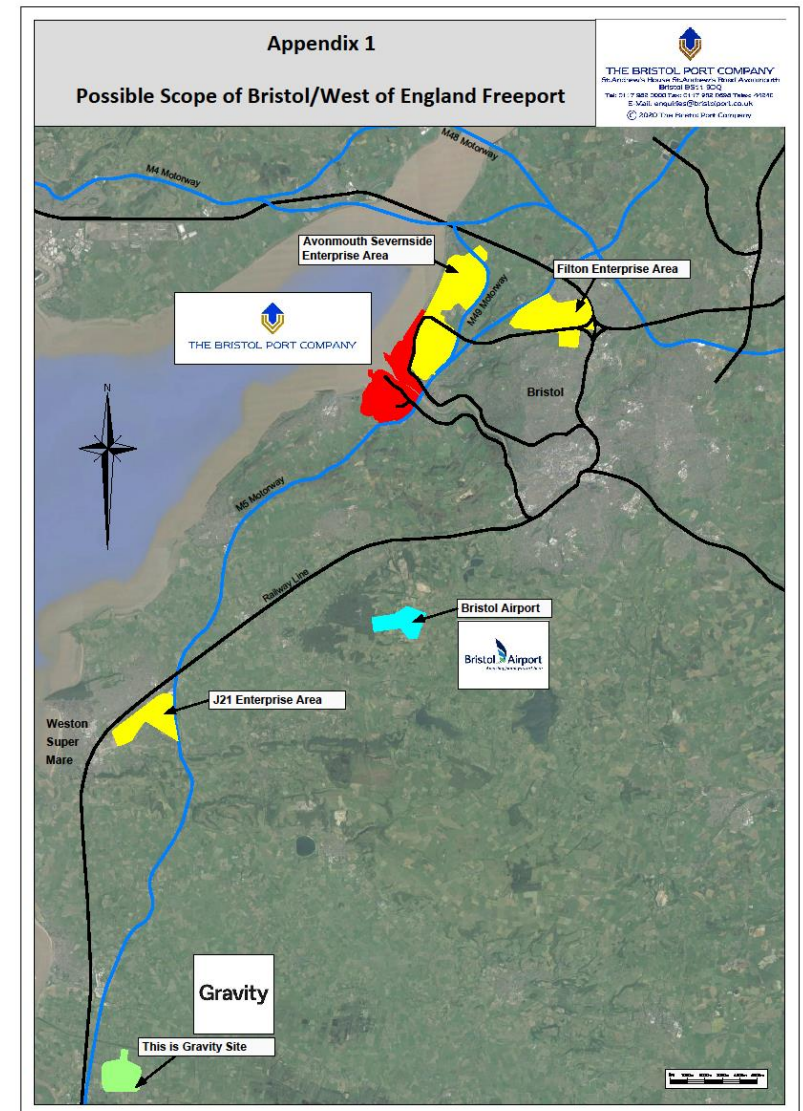
Agratas – EV battery factory



THE BRISTOL PORT COMPANY

Tata confirms Somerset will host £4bn battery factory

28 February · Comments





SMR

Press release

Great British Nuclear to buy two Hitachi sites for new nuclear development

Land is to be acquired by government to underpin nuclear revival. (Oldbury/Berkeley + Wylfa)

SAF



[Home](#) > [Transport](#) > [Aviation](#) > [Aviation and the environment](#)

Consultation outcome

Mandating the use of sustainable aviation fuels in the UK

Local Industrial Decarbonisation Project

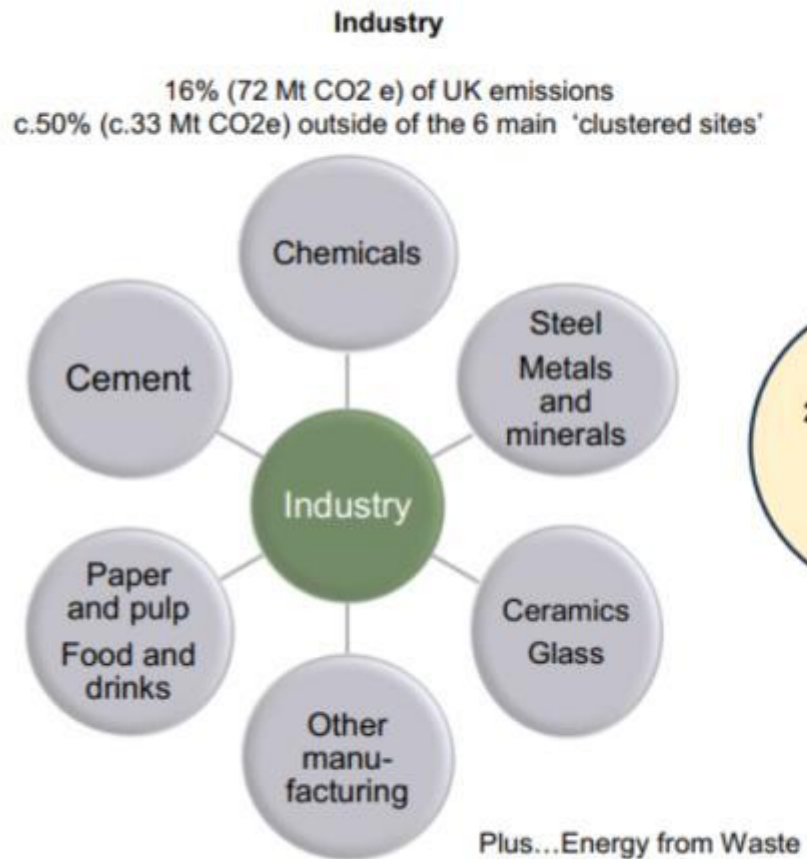


THE BRISTOL PORT COMPANY





Local Industrial Decarbonisation Plans - 2024



Decarbonisation

Energy and resource efficiency
e.g. energy management, heat recovery, recycled materials



Fuel switching
e.g. electrification, clean power, clean fuels, hydrogen



Carbon capture and usage or storage

With a focus on... a project pipeline of shared infrastructure



West of England Industrial Cluster

Core Partners



Representing or supported (collectively or individually) by:



Plus 200+ stakeholders

Collaborations



Letters of support received from:

Hynamics
Net Zero Industry Wales
Bristol City Council
Wales & West Utilities
SWNZH
The Wave
Flogas
DNV
Hills Group

Hydrogen SW
Swindon & Wiltshire LEP
Etex
Womble Bond Dickinson
Viridor
Seabank Power
SSE Thermal
Western Gateway
Bristol Port Co



Bristol Port pledges to become a net zero Port operator by 2040

The Port will achieve this by:

- Energy efficiency, optimisation initiatives and installing further renewable energy systems in the Port
- Transition to 100% E.V. where possible
- Explore opportunities for alternative fuels in larger plant and harbour vessels
- Deliver nature-based solutions



We are taking steps to reduce our Carbon Footprint

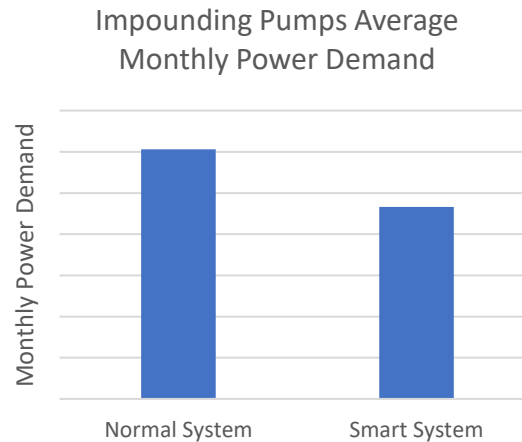


THE BRISTOL PORT COMPANY



Cargo Handling Equipment

- 47% BPC emissions in 2022/23
- Purchase 8 electric forklifts to replace older diesel models (~32 t/yr C)
- Reduce fuel consumption from anti idling campaign (~35 t/yr C)
- HVO trials
- Estimating future Hydrogen demand



Electricity

- 36% BPC emissions in 2022/23
- Repair and improved performance of wind turbines
- Installation of LED lighting across Port Estate (~200 t/yr C)
- Operation of energy efficient smart impounding pump (~100 t/yr C)



Marine

- 12% BPC emissions in 2022/23
- Plough dredger switch to HVO fuel (~180 t/yr C)
- Hydrogen catalytic electrolyser installed on cutter suction dredger (~55 t/yr C)
- Design of new clean cutter suction dredger in progress

Renewable Energy Generation at Bristol



THE BRISTOL PORT COMPANY



- The Port's annual power demand is ~45 GWh (11,000+ houses)
- In 2007 three 2 MW wind turbines were installed in Avonmouth
- 35% of the Port's electricity
- Generated 160+ GWh of green electricity and saved 64,000+ tonnes of Carbon
- We are currently investigating more renewables, including potential for solar power
- All new buildings and warehouses built with the capacity to hold solar panels

We are planning for future renewables & EV Charging



THE BRISTOL PORT COMPANY



Nature based solutions will play a fundamental role in making the transition to a future net zero Port:

- Network of over 100ha of wildlife corridors and green space
- Managing, protecting and enhancing a range of wildlife rich habitats, including meadows, woodland, wetlands, reed beds & saltmarsh and providing green corridors
- “Plant a tree for every employee” in 2022/23
- The Port has also bought 47 ha of farmland at Bleadon Levels where over 30ha of habitat has been created so far, including large areas of wetlands
- Long-term Woodland Management Plan to maximise the biodiversity & carbon storage potential



Future Blue Carbon Initiatives



THE BRISTOL PORT COMPANY

- Bristol Port introduced grazing to improve diversity and conservation status of Port saltmarshes in partnership with English Nature and a local organic farmer
- We are now exploring opportunities to manage and restore saltmarsh areas to improve their carbon storage potential and tackle climate change
- Saltmarshes are very efficient at locking away carbon which accumulates as a result of their high productivity and sediment-trapping ability
- The Port proposes to create over 130 ha of intertidal habitats on the Steart Peninsula to offset the impacts of future port development; an opportunity to store Carbon on a huge scale - the adj WWT Steart Marshes has, over 4 years, stored over 18,000 tonnes of organic carbon.



The rate of carbon storage in coastal wetlands is greater than by all forests combined, despite forests covering much larger areas! (WWT)



Recent works – O Shed



THE BRISTOL PORT COMPANY



Recent works – C Shed



THE BRISTOL PORT COMPANY



Recent works – C Shed



THE BRISTOL PORT COMPANY



Recent works – 3rd Party, Colas



THE BRISTOL PORT COMPANY



Recent works – 3rd Party, Etex



THE BRISTOL PORT COMPANY





We have a supply chain

Need to be an approved supplier -

- USP?
- Value for money
- Reaction time
- Adherence to programme

Opportunities: Bristol Port



THE BRISTOL PORT COMPANY

Director of Engineering chris.adams@bristolport.co.uk

Head of Infrastructure jeremy.curry@bristolport.co.uk

Director of Special Projects john.chaplin@bristolport.co.uk

Port's tenants and customers;

ADM Milling, Sims Metal Recycling, BCA, Etex, etc

Opportunities: Ports



THE BRISTOL PORT COMPANY

United Kingdom Major Ports Group <https://ukmajorports.org.uk>

British Ports Association <https://www.britishports.org.uk/>

South West Regional Ports Association <https://www.swrpa.org.uk>



THE BRISTOL PORT COMPANY



Thank you

www.bristolport.co.uk