

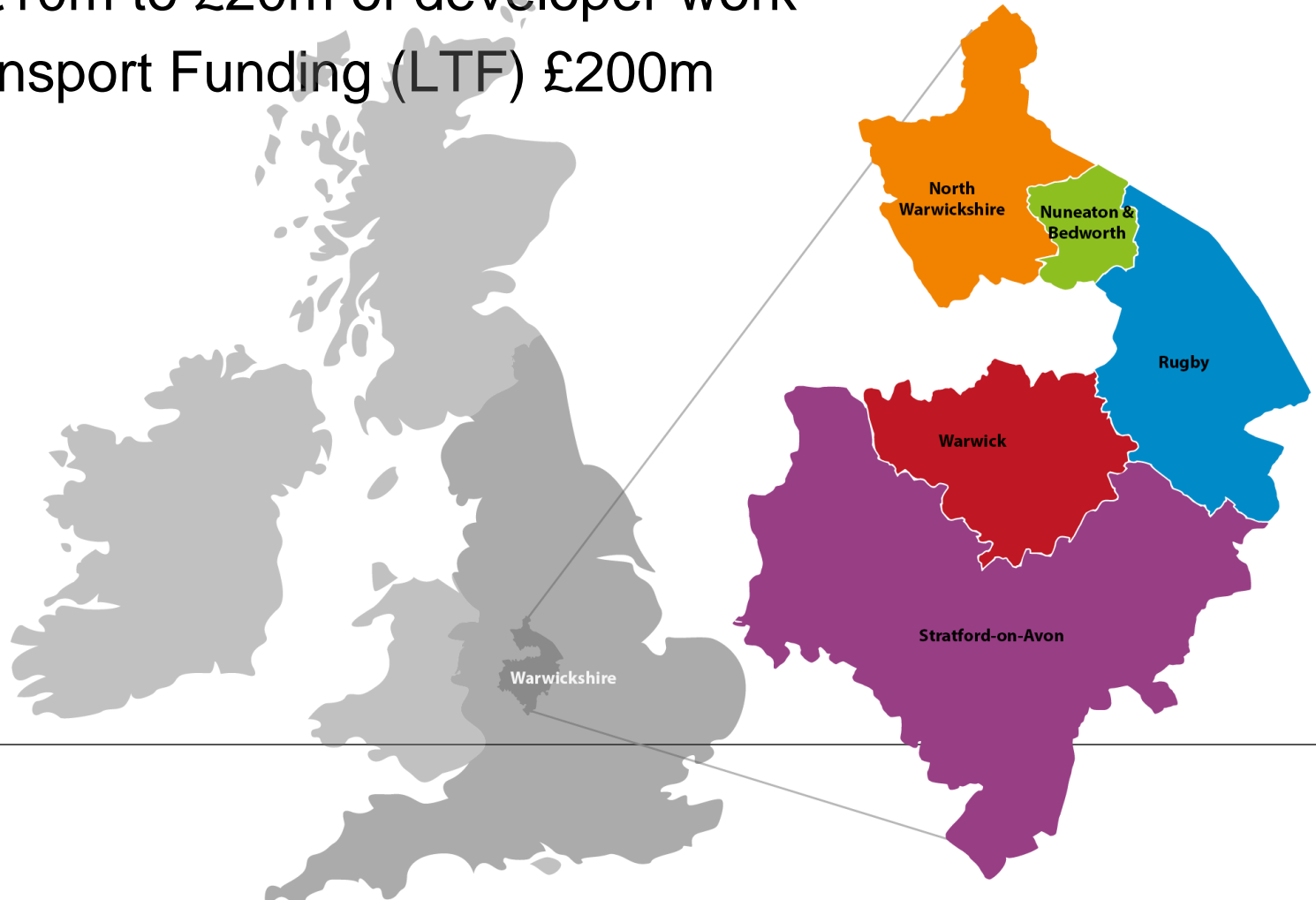
# Warwickshire County Council

Scott Tompkins

Director Environment, Planning and Transport

# Warwickshire County Council

- 2,300 miles of road and 1,600 miles of footway
- Approximately £45m capital annually
- Another £10m to £20m of developer work
- Local Transport Funding (LTF) £200m



# Major Construction Projects

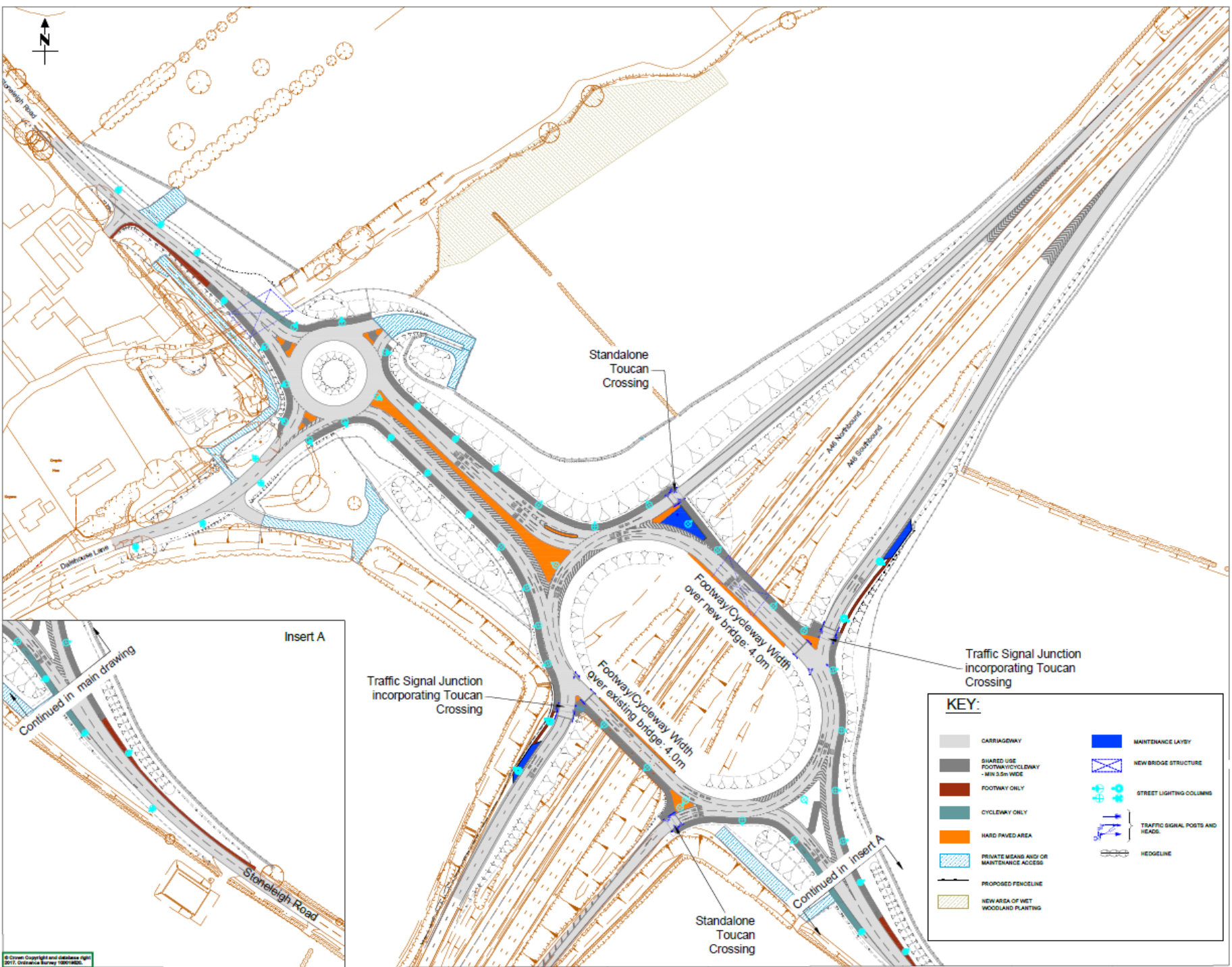
- A46 Stoneleigh Jct
- Bermuda Connectivity
- Avon Mill Rugby (2025 start)
- Kenilworth to Leamington Cycleway
- Europa Way
- Thickthorn Roundabout
- A47 Nuneaton – junction improvements and cycleway

# Delivery

- Balfour Beatty – Highways Term Maintenance Contractor
- New Highways Contract 2026
- Construction Framework – 2023
- Midlands Highways Alliance
- Professional Services Contract – 2023

# A46 Stoneleigh Junction





Standalone Toucan Crossing

Traffic Signal Junction incorporating Toucan Crossing

Footway/Cycleway Width over new bridge: 4.0m

Footway/Cycleway Width over existing bridge: 4.0m

Continued in Insert A

Insert A

Traffic Signal Junction incorporating Toucan Crossing

Standalone Toucan Crossing

**KEY:**

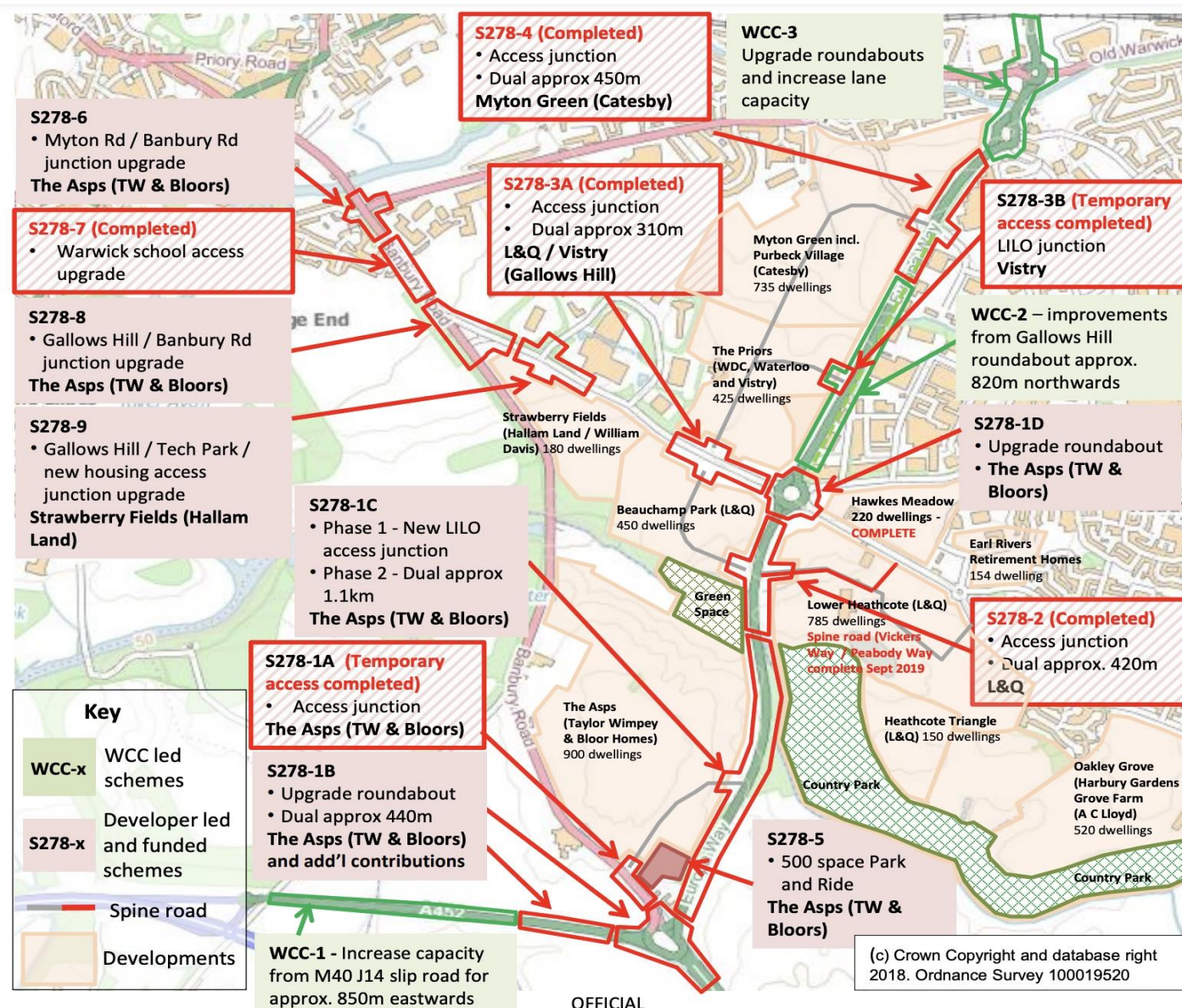
	CARRIAGEWAY		MAINTENANCE LANE
	SHARED USE FOOTWAY/CYCLEWAY - MIN 3.5m WIDE		NEW BRIDGE STRUCTURE
	FOOTWAY ONLY		STREET LIGHTING COLUMNS
	CYCLEWAY ONLY		TRAFFIC SIGNAL POSTS AND HEADS
	HARD PAVED AREA		HEDGE LINE
	PRIVATE MEANS AND/OR MAINTENANCE ACCESS		
	PROPOSED FENCE LINE		
	NEW AREA OF WET WOODLAND PLANTING		



30th April 2024 - 2

This 360 layout is provided for visualization purposes only.

# Europa Way – Leamington Spa



(c) Crown Copyright and database right 2018. Ordnance Survey 100019520





# Avon Mill - Rugby



# Questions